

Whiston Hospital Emergency Department Monthly Bulletin: October 2010 to September 2011

This bulletin provides a breakdown of all injury attendances at Whiston Hospital Emergency Department (ED) between October 2010 and September 2011. Injury attendances peaked in July (n=4,729), with February (n=3,715) having the least number of injury attendances (**Figure 1**).

For all months there were slightly more male (52%) injury attendances than females presenting at Whiston Hospital ED (**Figure 1**). Over a third (35%) of injury attendances were made by people aged 30 to 59 years and 25% by people aged 60 and over (**Figure 2**). The majority (96%) of injury attendances to Whiston ED stated their ethnicity as white (**Table 1**).

Table 2 illustrates the mode of arrival for patients presenting with injuries. The primary mode of arrival for injury attendances was private transport (63%).

Table 3 presents injury attendances by source of referral. Almost two-thirds (65%) of injury attendances self-referred.

Table 4 details the injury group of injury attendances. The majority (69%) of injury attendances were recorded as other injury. Of those attendances where an injury group was specified 47% were falls and 28% were road traffic collisions (RTCs). Assault attendees presenting at the Whiston ED between October 2010 and September 2011 were mainly male (59%) and 38% were aged between 30 and 59 years.

Table 5 shows the method of disposal of injury attendances; almost half (47%) attendees were discharged requiring no follow-up treatment.

Figure 1: Gender of injury attendances by month, October 2010 to September 2011

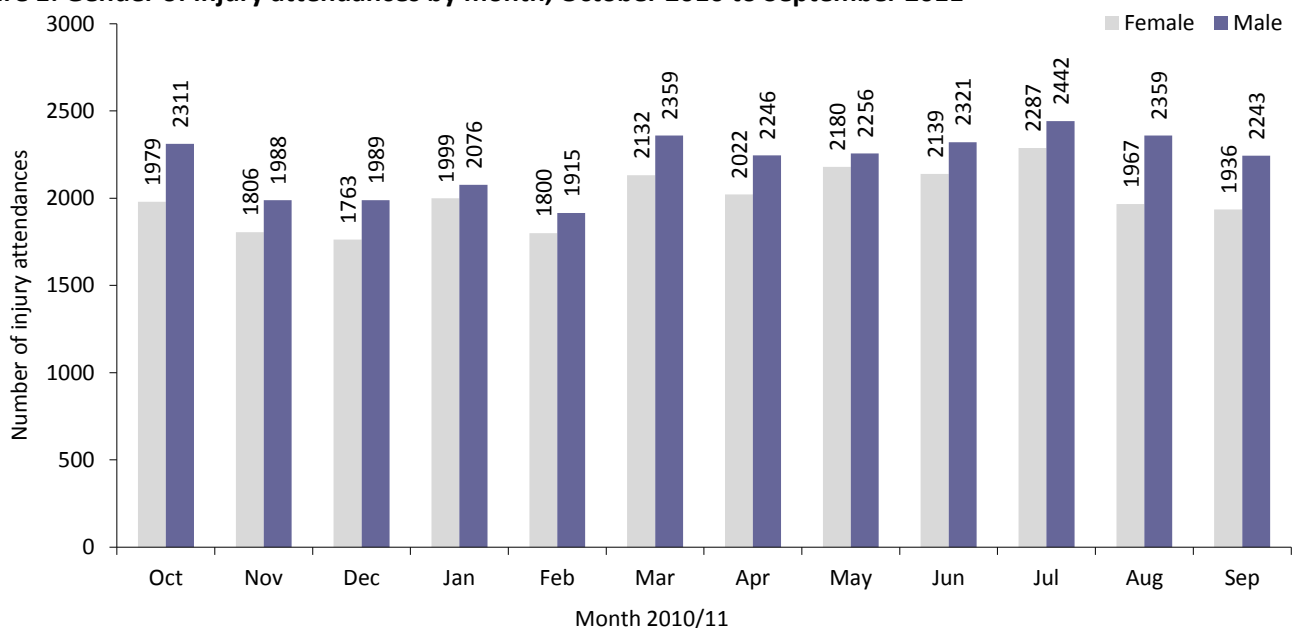


Figure 2: Age group of injury attendances by month, October 2010 to September 2011

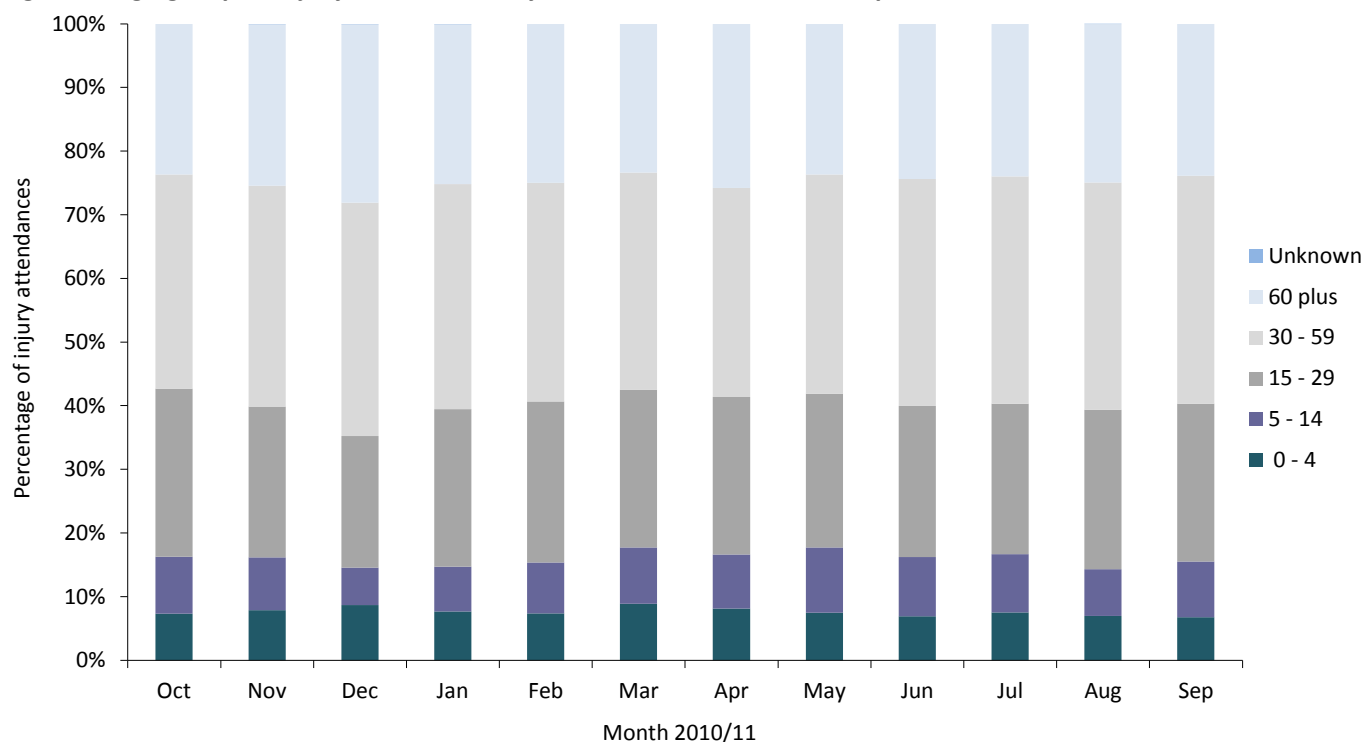


Table 1: Ethnicity of injury attendances, October 2010 to September 2011¹

Ethnicity	Oct	Nov	Dec	Jan	Feb	Mar	Apr	May	Jun	Jul	Aug	Sep	Total	%
White	4138	3637	3601	3898	3569	4345	4088	4257	4280	4555	4170	4029	48567	96
Black African	85	79	66	70	55	54	83	80	86	65	64	67	854	2
Other	19	22	33	23	24	30	19	28	29	31	34	21	313	1
Chinese	10	11	9	15	13	21	23	14	7	12	8	9	152	0
Black Caribbean	***	12	14	17	12	***	8	15	16	17	13	13	145	0
Not known	12	6	***	16	12	8	12	15	11	12	15	***	132	0
Not stated	9	9	12	12	***	9	10	10	***	22	13	11	125	0
Bangladeshi	***	***	***	9	8	8	6	9	8	***	***	7	67	0
Any other Asian background	***	5	***	6	9	***	7	***	8	***	***	5	58	0
Black other	6	8	***	***	5	***	***	***	9	***	6	6	54	0
Indian	***	***	***	5	***	***	6	***	***	***	***	***	25	0
Pakistani	***	***	***	***	***	***	***	***	***	***	***	***	17	0
Asian Bangladeshi	***	***	***	***	***	***	***	***	***	***	***	***	7	0
Total	4290	3794	3752	4076	3715	4491	4268	4436	4460	4729	4326	4179	50516	100

Table 2: Injury attendances by mode of arrival, October 2010 to September 2011

Arrival mode	Oct	Nov	Dec	Jan	Feb	Mar	Apr	May	Jun	Jul	Aug	Sep	Total	%
Private transport	2659	2386	2191	2417	2294	2970	2684	2884	2842	3046	2792	2665	31830	63
Ambulance	1374	1161	1312	1366	1158	1280	1288	1269	1381	1438	1291	1307	15625	31
Public transport	129	136	148	175	148	117	132	139	114	115	113	89	1555	3
Walked in	76	70	59	77	79	79	109	90	68	65	66	75	913	2
Police	38	27	25	21	16	18	31	28	31	27	22	21	305	1
Other	***	***	11	15	9	20	***	***	19	24	30	14	210	0
Unknown	***	***	6	5	11	7	***	***	5	14	12	8	78	0
Total	4290	3794	3752	4076	3715	4491	4268	4436	4460	4729	4326	4179	50516	100

¹ *** Please note that all numbers less than five have been suppressed in line with patient confidentiality and if there is only one number less than five in a category then two numbers will be suppressed at the next level (e.g. <6) in order to prevent back calculations from totals.

Table 3: Source of referral for injury attendances, October 2010 to September 2011

Source of referral	Oct	Nov	Dec	Jan	Feb	Mar	Apr	May	Jun	Jul	Aug	Sep	Total	%
Self referral	2786	2483	2483	2682	2343	2894	2859	2890	2847	3126	2816	2635	32844	65
Family member	486	518	427	512	519	603	611	564	606	558	599	591	6594	13
GP	464	301	305	408	403	460	243	404	476	451	349	341	4605	9
Emergency services	196	160	158	147	154	204	179	206	179	214	247	212	2256	4
Other referrer	136	123	123	105	93	124	149	138	132	133	121	142	1519	3
Walk-in centre	104	108	102	103	102	106	118	127	106	139	103	141	1359	3
Other hospital	49	24	36	41	33	42	35	30	45	42	35	36	448	1
Carer	23	30	28	34	26	23	25	27	20	24	19	24	303	1
Employer	15	21	12	15	13	10	14	14	16	15	15	11	171	0
Police	14	12	10	16	11	9	16	12	11	16	10	26	163	0
Educational establishment	13	6	13	9	9	10	14	18	18	6	7	17	140	0
Unknown	***	8	53	***	7	***	***	***	***	***	***	***	92	0
District nurse	***	***	***	***	***	***	***	***	***	***	***	***	***	0
Primary care	***	***	***	***	***	***	***	***	***	***	***	***	***	0
Total	4290	3794	3752	4076	3715	4491	4268	4436	4460	4729	4326	4179	50516	100

Table 4: Injury attendances by injury group, October 2010 to September 2011ⁱ

Injury group	Oct	Nov	Dec	Jan	Feb	Mar	Apr	May	Jun	Jul	Aug	Sep	Total	%
Other injury	3042	2467	2487	2841	2563	3096	2940	3099	3170	3375	3025	2929	35034	69
Fall	530	647	638	572	552	608	644	627	628	680	610	561	7297	14
RTC	415	454	379	349	341	450	339	348	348	291	352	313	4379	9
Assault	90	94	114	103	79	113	113	106	104	131	94	108	1249	2
Burns and scalds	94	46	28	80	71	70	78	100	77	97	91	85	917	2
Sports injury	59	41	47	73	63	103	98	72	55	63	81	105	860	2
Ingest	36	30	31	25	25	32	30	49	43	58	45	46	450	1
Deliberate self-harm	24	15	28	33	21	19	26	35	35	34	28	32	330	1
Total	4290	3794	3752	4076	3715	4491	4268	4436	4460	4729	4326	4179	50516	100

Table 5: Discharge destination of injury attendances, October 2010 to September 2011*

Disposal	Oct	Nov	Dec	Jan	Feb	Mar	Apr	May	Jun	Jul	Aug	Sep	Total	%
Discharged no follow up	2013	1857	1703	1867	1746	2156	1913	2116	2069	2238	1998	1875	23551	47
Admissions	1296	1111	1183	1280	1154	1300	1268	1316	1370	1438	1306	1265	15287	30
Discharged to GP	372	262	259	298	277	338	356	308	293	311	322	324	3720	7
Fracture clinic	172	147	196	201	165	220	235	232	216	213	197	227	2421	5
Did not wait	156	158	177	159	169	202	230	189	220	234	165	172	2231	4
Other	124	115	87	104	67	82	108	88	113	131	188	154	1361	3
ED review clinic	60	60	45	77	50	71	54	82	73	57	54	70	753	1
Sent to other hospital	32	24	35	31	23	29	32	36	38	30	22	24	356	1
Outpatient clinic	22	19	30	23	30	33	24	15	26	27	30	21	300	1
Return for treatment	21	19	17	15	16	30	28	34	27	28	25	31	291	1
Discharged with ENT appointment	20	20	20	18	18	25	19	18	15	21	18	15	227	0
Physiotherapy clinic	***	***	***	***	***	***	***	***	***	***	***	***	***	0
Sent to GP assessment unit	***	***	***	***	***	***	***	***	***	***	***	***	***	0
Total	4290	3794	3752	4076	3715	4491	4268	4436	4460	4729	4326	4179	50516	100

*ENT = ear, nose and throat.

Published January 2012

Nicola Davenport (Merseyside and Cheshire TIIG Officer)

Centre for Public Health, Liverpool John Moores University, 2nd Floor, Henry Cotton Campus, 17-21 Webster Street, Liverpool, L3 2ET

Tel: 0151 231 4500 Email: n.m.davenport@ljmu.ac.uk

Website: www.tiig.info (please note that all data requests should be made through the TIIG website)ⁱ Due to low numbers and patient confidentiality firework injuries have been categorised under other injury (n=8).